



Welcome TO

Sheraton Munich
Airport Hotel.
Discover Bavarian
hospitality, here,
where welcoming
the world.

ROOMS & SUITES

CLASSIC ROOMS

Comfortable rooms in country-house style, air-conditioned, located at the ground floor, twin beds, mini bar, trouser press, cable-TV, high speed internet access, flatscreen TV, electrical window blinds.

SUPERIOR ROOMS

Furnished like the Classic rooms, but with twin or French beds and individually controlled air-conditioner, Sweet Sleeper® beds, trouser press and ironing station, coffee maker

EXECUTIVE ROOMS

Furnished like the Superior rooms, mostly facing towards the quiet, garden side.

JUNIOR SUITES AND DELUXE SUITES

Furnished like the Executive rooms, from 42m² to 68m² in size, with optically separated living and sleeping areas.

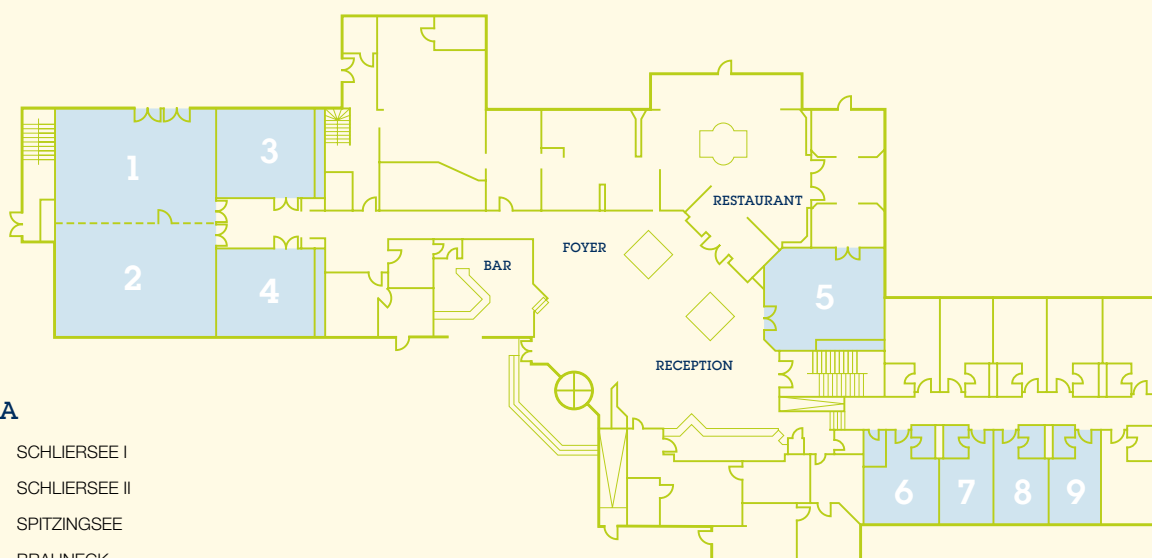
HOTEL INFORMATION

SERVICE AND FACILITIES

Choose your very own home-from-home from any of our 170 rooms and suites. All rooms are fully air-conditioned, approximately 20m² in size and offer all the comforts of a modern business hotel. We invite you to relax in our wellness area with pool, jacuzzi, sauna, steam bath and solarium as well as a massage and fitness area. A modern fitness room with fitness and cardio work-out awaits you.

PLANNING FOR SUCCESS

Just a few minutes from Munich airport, yet far removed from daily stress, our 13 function rooms are at your disposal. Are you planning a small board meeting or a conference for up to 200 participants? Located on two floors, our function rooms are fully airconditioned and equipped with the latest in conference technology (W-LAN), offering you the ideal meeting space for every occasion. Our professional sales team is at your service to assist with the organization and implementation of your event.

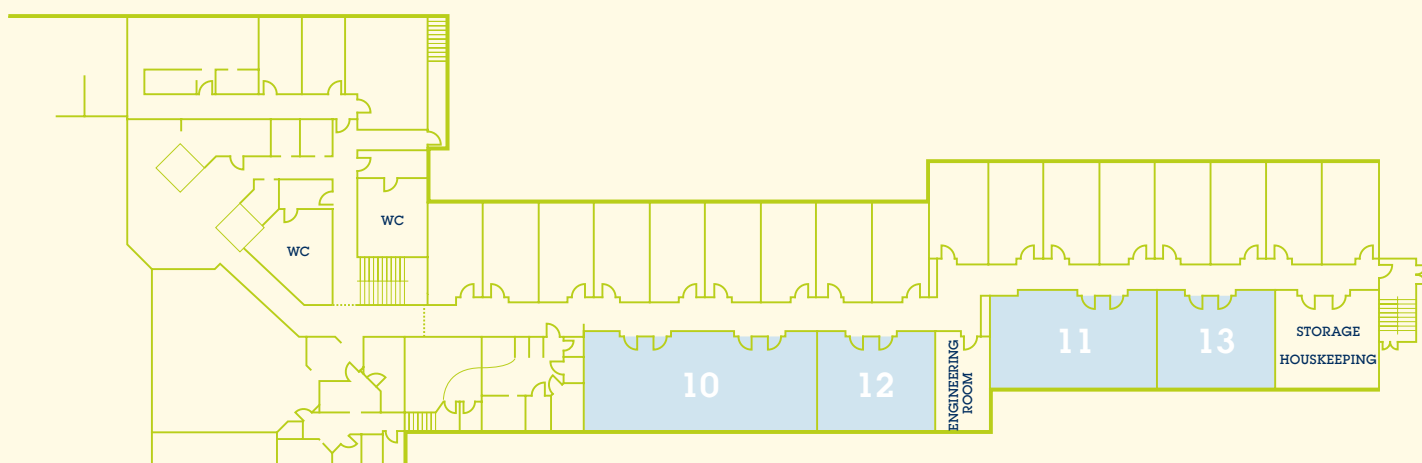


LEVEL A

- ROOM 1: SCHLIERSEE I
- ROOM 2: SCHLIERSEE II
- ROOM 3: SPITZINGSEE
- ROOM 4: BRAUNECK
- ROOM 5: WITTELSBACHER STUBE
- ROOM 6: ERDING
- ROOM 7: FREISING
- ROOM 8: LANDSHUT
- ROOM 9: DEGGENDORF

ROOM DIMENSIONS AND SEATING CAPACITY

Room	Block	U-shape	Classroom	Theatre	Banquet	Area in m ² (sqft)	Length in m (ft)	Width in m (ft)
SCHLIERSEE	70	66	132	200	100	190,00 (2130,40)	11,75 (38,54)	17,00 (53,14)
SCHLIERSEE I	40	32	45	100	40	95,00 (1065,20)	11,75 (38,54)	8,10 (26,57)
SCHLIERSEE II	40	32	45	100	40	95,00 (1065,20)	11,75 (38,54)	8,10 (26,57)
SPITZINGSEE	16	16	20	30	20	45,00 (473,40)	7,00 (22,96)	6,50 (21,32)
BRAUNECK	16	16	20	30	20	45,00 (473,40)	7,00 (22,96)	6,50 (21,32)
WITTELSBACHER STUBE	20	20	20	40	36	58,00 (634,30)	8,50 (27,88)	7,00 (22,96)
ERDING	12	-	-	-	-	25,00 (290,30)	5,50 (16,40)	5,00 (16,40)
FREISING	8	-	-	-	-	22,00 (215,00)	3,90 (12,80)	5,00 (16,40)
LANDSHUT	8	-	-	-	-	22,00 (215,00)	3,90 (12,80)	5,00 (16,40)
DEGGENDORF	8	-	-	-	-	22,00 (215,00)	3,90 (12,80)	5,00 (16,40)



LEVEL B

- ROOM 10: MÜNCHEN
- ROOM 11: FRANKFURT
- ROOM 12: DÜSSELDORF
- ROOM 13: OFFENBACH

ROOM DIMENSIONS AND SEATING CAPACITY

Room	Block	U-shape	Classroom	Theatre	Banquet	Area in m ² (sqft)	Length in m (ft)	Width in m (ft)
MÜNCHEN	40	26	40	90	50	112,00 (1205,12)	15,60 (51,20)	6,80 (22,30)
FRANKFURT	30	28	35	70	50	80,00 (860,80)	11,12 (36,50)	6,80 (22,30)
DÜSSELDORF	18	18	20	36	20	55,00 (591,80)	7,60 (24,90)	6,80 (22,30)
OFFENBACH	18	18	20	36	20	55,00 (591,80)	7,60 (24,90)	6,80 (22,30)



**SHERATON MUNICH
AIRPORT HOTEL**
Freisinger Strasse 80
85445 Schwaig-Oberding, Germany
t — +49 (0)89 92722 0
f — +49 (0)89 92722 800
airportmuenchen@sheraton.com
sheratonmunichairport.com

RESTAURANTS & BAR

Enjoy Bavarian and international specialties and attentive service in the cozy “Zur Schwaige” restaurant or on our summer terrace, in the wood-paneled Wittelsbacher Stube, which is also available for private parties and at the “Montgolfière” lobby bar.

DIRECTION

BY SUBURBAN TRAIN (S-BAHN):

Take the S8 (Flughafen/airport) or the S1 (Freising-Flughafen/airport); board the rear rail carriage, exit at Munich airport (Flughafen München), from here take the shuttle bus to the hotel.

BY CAR

From the “Flughafen München” (Airport Munich) motorway exit, it is 5 km to Schwaig. Travel in the direction of “Erding/Schwaig” until the “Erding” exit, and then follow the signs for “Schwaig”. Public underground parking garage right at the hotel, with sufficient parking spaces (14 € per day).

OUR LOYALTY PROGRAM

We love your loyalty. And we want to thank you for choosing us. The Starwood Preferred Planner® program does just that. You and your attendees can earn Starpoints® when you stay or have a meeting with us. Then redeem them for free hotel stays or room upgrades here or at Sheraton®, Westin®, W®, Le Méridien®, St. Regis®, and Luxury Collection® hotels and resorts. It’s our way of saying thanks.

More informations you can find here:
starwoodmeetings.com